

SANTA MARIA VILLAGE P.U.D. PLAT No.2

A PLANNED UNIT DEVELOPMENT

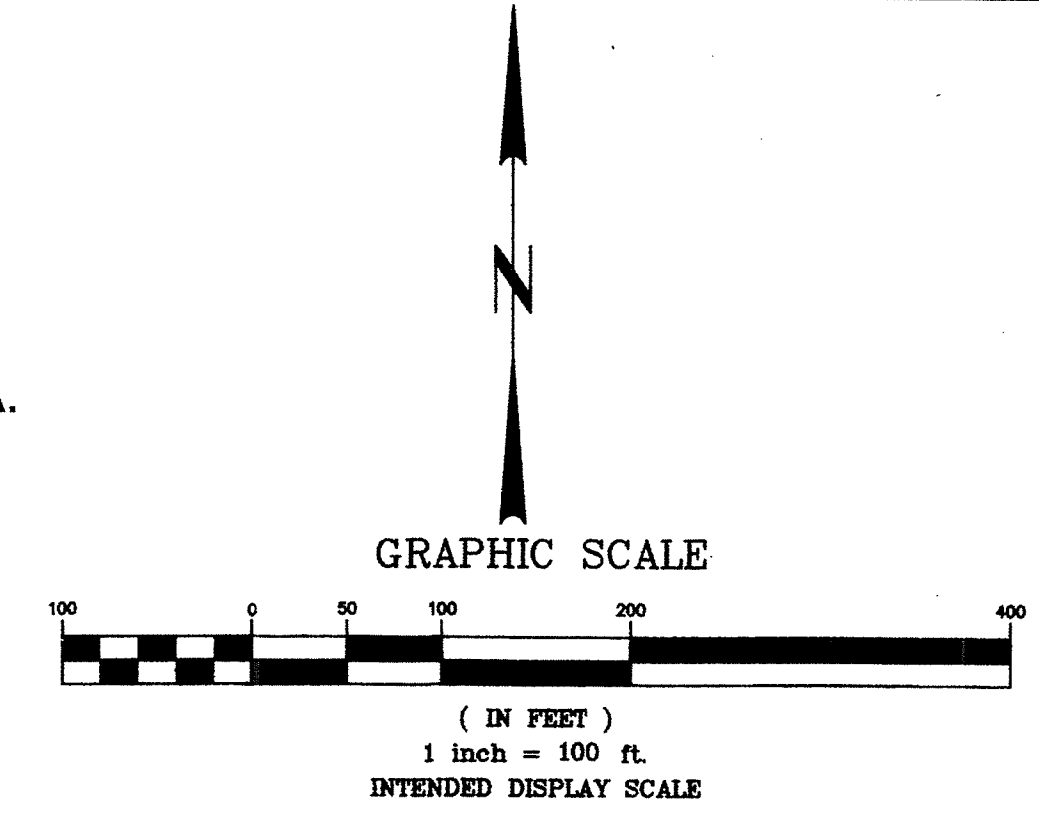
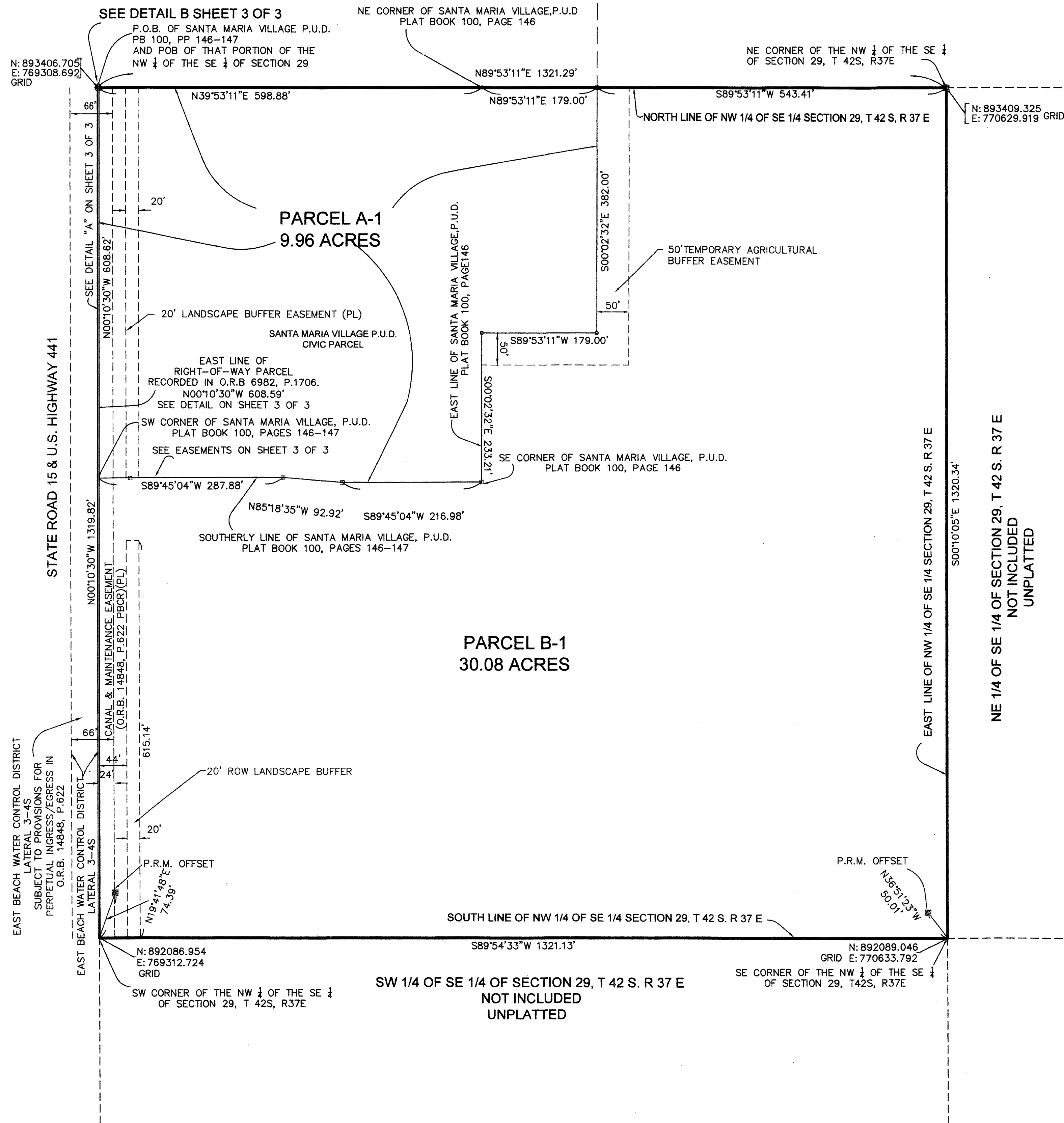
BEING A REPLAT OF SANTA MARIA VILLAGE P.U.D. CIVIC PARCEL

AS RECORDED IN PLAT BOOK 100, PAGES 146-147, PUBLIC RECORDS OF PALM BEACH COUNTY, FLORIDA,

AND A PORTION OF SECTION 29,

TOWNSHIP 42 SOUTH, RANGE 37 EAST, PALM BEACH COUNTY, FLORIDA

NE 1/4 OF SECTION 29, T 42 S. R 37 E, NOT INCLUDED, UNPLATTED



- LEGEND**
- (c) INDICATES COMPUTED
 - (d) INDICATES DESCRIPTION
 - (g) INDICATES GRID BEARING AND/OR DISTANCE
 - (m) INDICATES MEASURED
 - (p) INDICATES PLAT
 - (PL) EASEMENTS PER PB 100, P. 146
 - BM INDICATES BENCH MARK
 - C M INDICATES CONCRETE MONUMENT
 - O/S INDICATES OFFSET
 - P.R.M. INDICATES PERMANENT REFERENCE MONUMENT
 - R/W INDICATES RIGHT-OF-WAY
 - ROW INDICATES RIGHT-OF-WAY
 - T INDICATES TOWNSHIP
 - R INDICATES RANGE
 - P.B INDICATES PLAT BOOK
 - P. INDICATES PAGE
 - O.R.B. INDICATES OFFICIAL RECORD BOOK
 - P.O.B INDICATES POINT OF BEGINNING
 - P.O.C INDICATES POINT OF COMMENCEMENT
 - ☐ INDICATES CENTERLINE
 - INDICATES 4"x4" SET PRM CONCRETE MONUMENT WITH ALUMINUM CAP STAMPED LB 3411
 - INDICATES SET 5/8" IRON ROD WITH CAP STAMPED LB 3411
 - SET ALUMINUM CAP STAMPED PRM LB 3411, IN CONCRETE CURB FOR NORTHWEST CORNER.
 - ⊙ FOUND 5/8" IRON ROD WITH CAP STAMPED RPB
 - ◇ SECTION CENTER
- CURVE ABBREVIATIONS**
- R indicates radius
 - L indicates arc length
 - Δ indicates central angle

INSTRUMENT PREPARED BY
FERNANDO GONZALEZ, P.S.M.
FLORIDA LICENSE No.4994
PAG SURVEYORS, INC. LB 3411
1016 SOUTHEAST 4TH STREET
BELLE GLADE, FL 33430-4330

83

STATE OF FLORIDA
COUNTY OF PALM BEACH
THIS PLAT WAS FILED FOR
RECORD AT.....
THIS DAY OF

AND DULY RECORDED IN
PLAT BOOK No.
ON PAGES

SHARON R. BOCK
CLERK AND COMPTROLLER

BY.....
DEPUTY CLERK